



# Tongali Overseas Entre Camp

in Aichi



Date :

2021 **2/18 ~ 2/28**

Venue :

ONLINE

Nagoya University Higashiyama Campus

Mikawawan Resort Linx

2/18 ~ 2/20

2/21 ~ 2/22

2/23 ~ 2/28

\* Participants need to attend all the courses

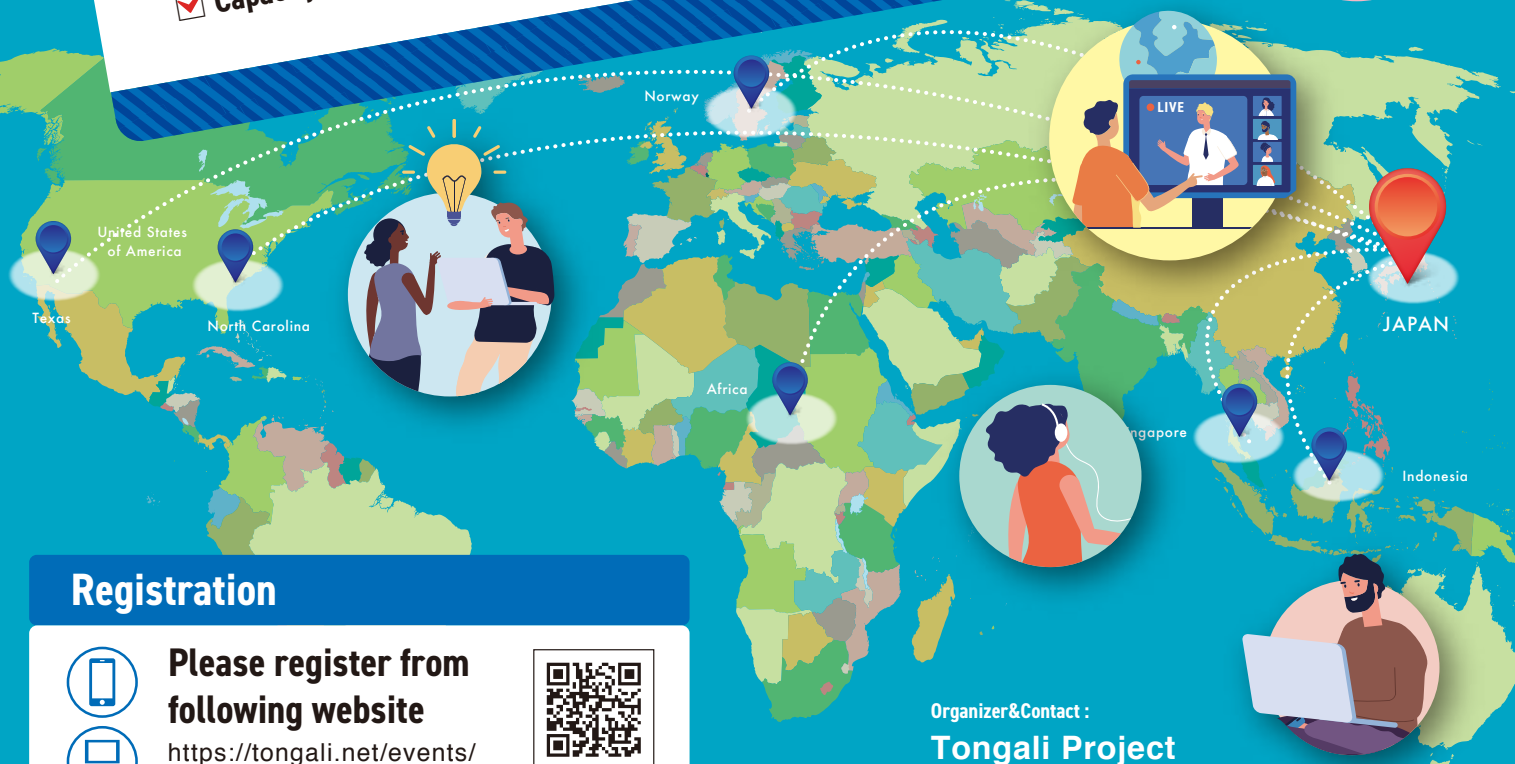
✓ **Language : English**    ✓ **Fee : FREE**

✓ **Eligibility :** Undergraduate students, graduate students, postdocs, researchers in Tokai region

✓ **Capacity :** 30 people (will be selected based on your business idea)

## Course description :

Tongali Project, in cooperation with IEEC (NU Abroad), NU Tech, and other overseas universities and institutions, provides a virtual overseas entrepreneurship training program using online tools. At the camp, you will learn cross cultural business environment and build a competitive business model. On the last day, you will showcase your pitch in front of foreign investors.



## Registration



Please register from following website



<https://tongali.net/events/overseas-virtual-camp2021/>



**Deadline : 2020.12.28 (MON)**

Organizer & Contact :

**Tongali Project**

TEL : 052-747-6490

Mail : [tongali@aip.nagoya-u.ac.jp](mailto:tongali@aip.nagoya-u.ac.jp)

URL : <https://tongali.net/>





# Tongali Overseas Entre Camp

## in Aichi



## Schedule

ONLINE

Feb.18~20 (Day 1-3)

Nagoya University Higashiyama Campus

Feb.21・22 (Day 4-5)

Mikawawan Resort Linx

Feb.23~28 (Day 6-11)

Schedule		Time	Program	Lecturer/Organizer
Day 1	Feb.18	10:00-12:00	Global Cultures in English	NC State University Global Training Initiative (GTI) NU Tech <sup>1</sup>
Day 2	Feb.19			
Day 3	Feb.20			
Day 4	Feb.21	10:00-17:00	Leading a Multicultural Team Workshop	IEEC <sup>2</sup> (NU Abroad) Kansai Gaidai University
Day 5	Feb.22	10:00-12:00	Social innovation cases in the US, India, Norway, and Tanzania.	The University of Texas at El Paso Sustainable Living Lab (SL2) <sup>3</sup> ICMG Singapore <sup>4</sup>
		14:00-16:00	Social innovation cases in Asia	
Day 6	Feb.23	10:00-12:30	Team Building Activity	WAC <sup>5</sup>
Day 7	Feb.24	13:00-18:00	【Basic Course : 20 people】 Virtual Edition Entre Bootcamp (Create a business model)	Reactor School <sup>6</sup> WASABI Creation <sup>7</sup>
Day 8	Feb.25			
Day 9	Feb.26			
Day 10	Feb.27	9:00-12:00	【Advanced Course : 10 people】 Entrepreneurship and US Business Program (Refine your current business model)	GTI <sup>8</sup> NU Tech
Day 11	Feb.28	9:00-11:00	Debut Day 1.0	The University of Texas at Austin NU Tech National University of Singapore WASABI Creation
		13:00-17:30	Debut Day 2.0	

1 Technology Partnership of Nagoya University, Inc (<https://www.nutechtransfer.org/>)

2 International Education & Exchange Center, Nagoya University (<http://ieec.iee.nagoya-u.ac.jp/ja/abroad/>)

3 <https://www.sl2square.org/>

4 <https://www.icmg.com.sg/ja/>

5 <https://www.wacwac.jp/>

6 <https://www.reactor.school/>

7 <https://www.wasabication.com/home-jp>

8 <https://gti.ncsu.edu/>

\* Course content is subject to change based on the Guidelines for Activities at Nagoya University During the Novel Coronavirus (COVID-19) Pandemic.